



## Main Installation Vessel (MIV)

**Oshe Honmi** is an installation vessel with large accommodation capacities and can be equipped with pipelay capabilities for offshore construction works:

- 408 Pax Accommodation
- 300 T SWL, Man-Riding Crane Certified
- 1500 sqm Clear Deck Space
- 15 T/m<sup>2</sup> Deck Strength
- 2 Boat Landing
- 10 Point Mooring System



## ARIOSH OSHE HONMI (MIV)

### VESSEL MAIN PARTICULARS

Vessel Name	Oshe Honmi
Manager	Ariosh Ltd.
Owner	Ariosh Ltd.
Vessel design	Poet Shipbuilding & Engineering
Type	Main Installation Vessel (MIV)
Class definition	BV I +HULL +MACH, Offshore Service Barge-Lifting / Accommodation, Pipelay Unrestricted Navigation, Alm, CRC (I)
Vessel built	2015
Yard n°	AWB 1570
Port of registry	Lagos
Flag State	Nigeria
IMO Number	351140000
Call sign	3FKZ4

### PERFORMANCE

Min opp water depth	9 m
Min opp wind speed	25 knots
Fuel capacity	1726 T
F.O consumption	2.5 MT/day

### CARGO DECK

Strength	15 T/ m <sup>2</sup>
Clear area	1500 sqm
Sheltered free area	600 sqm + 150 sqm
Fenders	3 x Yokohama Pneumatic Fenders

### HELIDECK

Helideck arrangement	Yes - CAP 437 Compliant Helideck
Aircraft types	S92 and S61N Helicopter
"T" Value	12.8 T
"D" Value	22.2 m

### PRINCIPAL DIMENSIONS

LOA	120.168 m
Breadth mld	31.7 m
Depth mld to main deck	9.0 m
Summer draft	6.00 m
Air draft	40.0 m
Deadweight	11,797.378 T
Lightship	10299.653 T
Gross tonnage	18,339 T
Net tonnage	5,501 T

### ACCOMMODATION

Total number of bunks	408 Persons
1 man cabins	6 Cabins
2 man cabins	31 Cabins
4 man cabins	85 Cabins
Meeting room	20 Seats
Training room	60 Seats
Offices	8 Rooms (30 Workstations)
Conference room	20 Seats
Passenger mess room	200 Pax (315.75 m <sup>2</sup> )
Officer mess room	50 Pax (114.3 m <sup>2</sup> )
Recreation room	2 (Officers & Crew Room)
Gymnasium	1
Hospital room	1
Medic room	1

### GANGWAY

Type	Telescopic gangway, pedestal mounted, heave compensated
Length	42.5m
Manufacturer	Uptime

## ARIOSH OSHE HONMI (MIV)

### ELECTRIC POWER GENERATION

Main engines	Non propelled
Main generators	8 Nos x 940KW Capacity each
Emergency generators	500 KW
Electrical supply	440V / 220V - 60Hz / 50Hz

### TANK CAPACITIES

Total ballast	10,281.1 m <sup>3</sup>
Total potable water	4,217.7 m <sup>3</sup>
Total fresh water	4,217.7m <sup>3</sup>
Total fuel oil	1,979.6m <sup>3</sup>
Total fuel oil	1,979.6m <sup>3</sup>
Total dirty oil	1,979.6m <sup>3</sup>
Total bilge:	68.9m <sup>3</sup>
Total sewage:	122.1m <sup>3</sup>

### OTHER EQUIPMENT CAPABILITIES

Fresh water maker	2 x PETSEA RO SW 800 ABF 75m <sup>3</sup> /day.
Sewage Treatment	Detegasa PRB 1400. 14,000 L/day
Ballast/Drill Water Pump	2 X 1000 m/hr @ 30 m head

### POSITIONING AND WINCH FEATURES

Mooring Arrangement	10-Point Mooring
Mooring winch type	Electro-hydraulic power pack
Mooring winch make	Jebsen & Jessen Offshore Equipment Pte Ltd (Singapore)
Winch drive medium	Hydraulic mooring winch
Anchor type	Delta flipper anchors
Anchor weight	12 T
Anchor/sea mode	4 MT
Anchor operations	8.5 MT

### DECK EQUIPMENT

Anchor windlass	10T x 15M/MIN ME- HTGW-SD-10B15
Tugger winch	Diameter: 34mm, Length: 120m SWL :10T
Mooring winch	10-point mooring
Mooring system	Electro-hdraulic power pack
Lifting device	1 x billy pugh X-571
Main crane	300T Pedestal (SCM China)
Provision crane	2 Nos x 15T (SCM China)
Unloading zone	2 x boat landings (PS & SB)
Fuelling station	2 x surfer refueling stations (PS & SB)

### ANCHOR MOORING SYSTEM

Mooring winch	10-point mooring
Tugger winch	Diameter: 34mm, Length: 120m, SWL: 10T
Anchor type	12 Nos x 12T Delta Flipper
Anchor capacity	12 T
Anchor wire	08 x 52 mm x 1,500 m, 02 x 64 mm x 1,300 m
Anchor windlass	10 T x 15 M/MIN ME-HTGW-SD-10B15
Spare anchor wires	Available
Spare anchor peanants	Available

## ARIOSH OSHE HONMI (MIV)

### MAIN CRANE

Manufacturer	SCM China
Model	SCM, 300 T SWL, man-riding rated Crane
Type	Pedestal mounted
Power source	Hydraulic
Year built	2014
Classification	ABS Class
Design SWL	300 T SWL
Current certified SWL	300 T SWL
Hoist speed	62 M
Boom length	Mini: 11.2 M, Max: 62 M
Operational radius	5 T

### AUXILLARY CRANE

Manufacturer	SCM China
Model	SCM, 15 T SWL
Power source	Elect/Hydraulic slewing gear
Year built	2014
Classification	BV class
Design SWL	15 T SWL
Current certified SWL	15 T SWL
Hoist speed	17 M/Min
Boom length	12 M
Operational radius	4.9 M to 12 M

### FIRE FIGHTING & ANTI POLLUTION EQUIPMENT

Fire pumps capacity	3 x 100M/Hr @ 130 M head
Foam pump for helideck	2 x 1000M/HR @ 120 M head
Sprinkler pump	102m3/Hr @60m head Vertical Type centrifugal pump AC440 3Ph 60Hz, 30kw Electric Motor Drive
Deluge system	Available

### NAVIGATION & COMMUNICATION EQUIPMENT

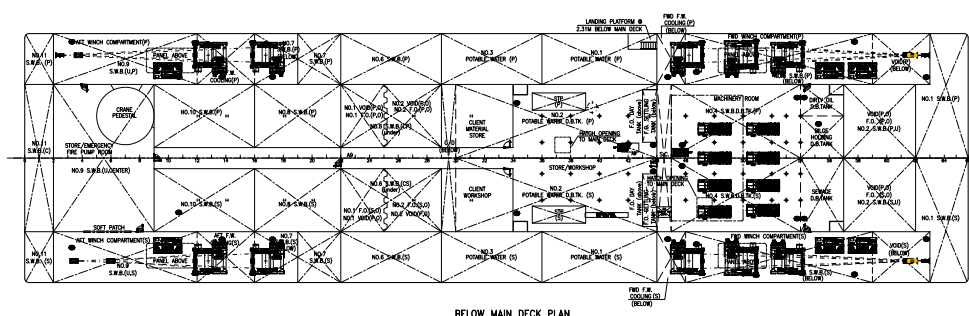
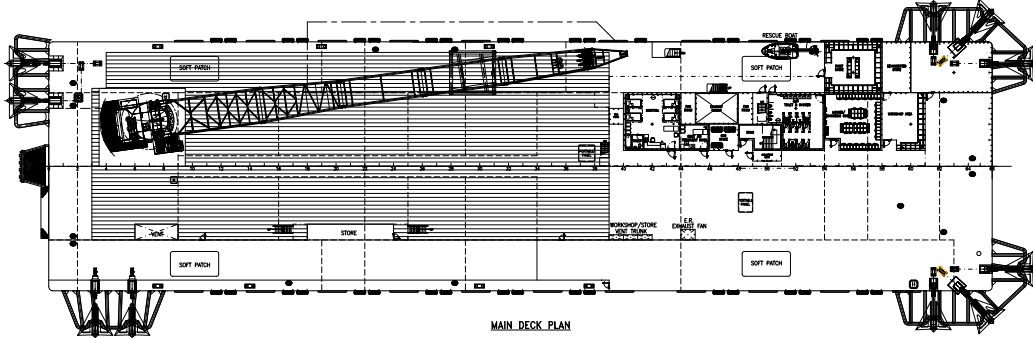
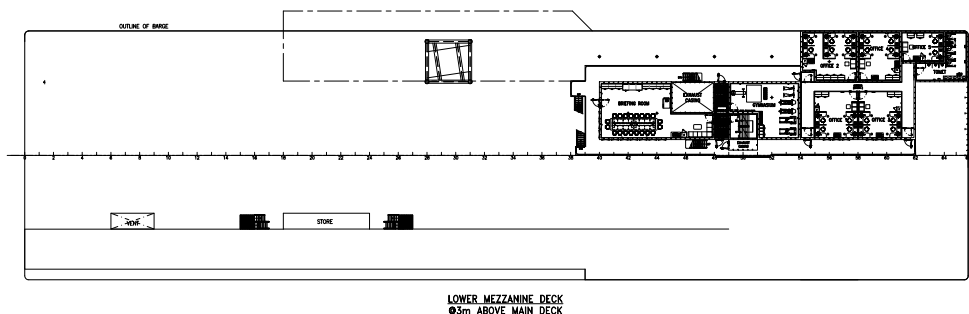
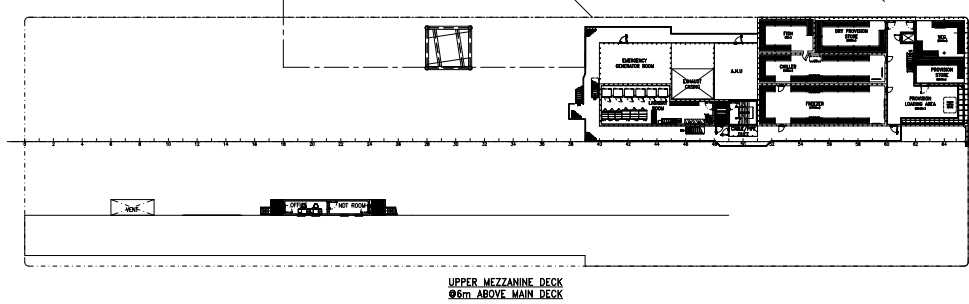
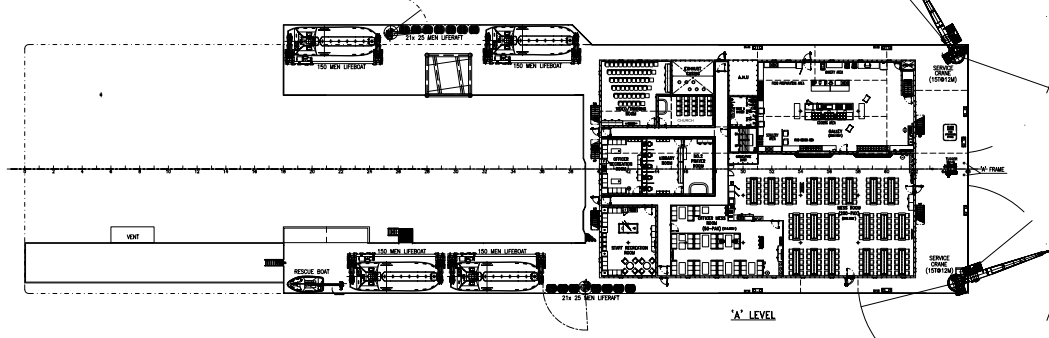
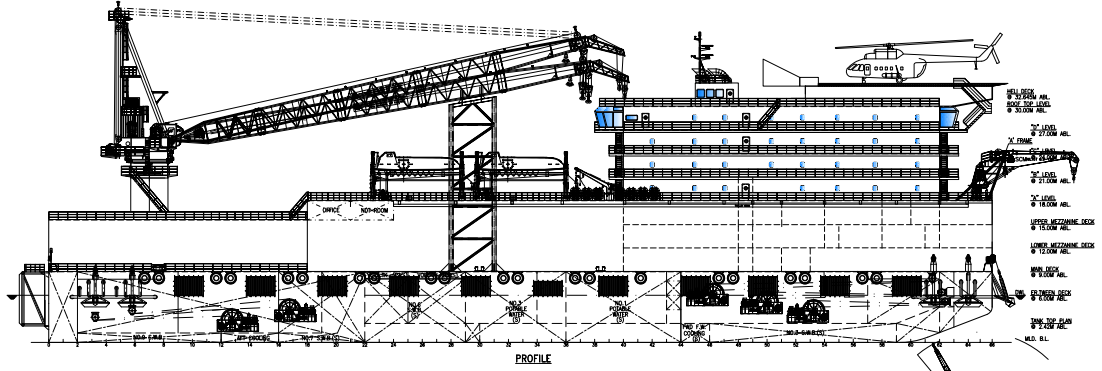
GPS	Furuno SPR-1400
Gyro compass	Simrad GC-85
Magnetic compass	T-100B Daiko
Radar (ARPA)	Simrad
AIS	Furuno FA-150
Echo sounder	Furuno FAX 409
CCTV	10 x Hikvision
VHF radio station	Furuno FM-8900S
MF/HF radio station	Samyung SRG-3150DN
GMDSS portable VHF	Sailor SP3520 MSI No. 351140000 INMARSAT-C No. 435114016 INMARSAT-C No. 435114015
EPIRB	Mcmurdo
SART	3 Nos x S4 Rescue SART 2 Nos x TRON SART 20
Navtex receiver	PWR NT-1800
Fleet broadband	KVH broadband
VSAT	V7 HTS, Tracphone
Interior com system	12 x UHF handheld radio
PA system	Vingtor
Sound power phone	Vingtor VSP-213-L

### SAFETY EQUIPMENT

Rescue boat	2 Nos x 6 persons each
Life boat	3 Nos x 150 persons
Inflatable life raft	42 Nos x 25 persons
Lifejackets	615 Sets
Lifebuoys	20 sets

### CONTACT

V-sat ship phone bridge	+1(505)916-3473, +2349127421782
Fleet Broadband	Yes
Email address	marine@ariosh.com bridge.oshehonmi@ariosh.com



BELOW MAIN DECK PLAN

**ariosh**

+234.803.900.5001 | +234.803.900.5015

[www.ariosh.com](http://www.ariosh.com) | [bd@ariosh.com](mailto:bd@ariosh.com) | [info@ariosh.com](mailto:info@ariosh.com)