



Over 21 years of Operations



Over 400 Experienced Professionals



Engineering Facilities



Marine Assets



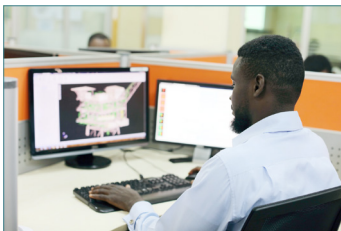
Fabrication Yard & Marine Logistics Base

Ariosh delivers Engineering, Procurement, Construction and Installation services to the Oil and Gas industry.

Ariosh has built an enviable and well-established reputation backed by over 21 years operations, offering services ranging from engineering, fabrication, construction, installation, hook-up and commissioning; to revamp of onshore production facilities, offshore platforms and associated pipelines.

What we do: Concept to Commissioning

Engineering



- Conceptual Studies
- FEED
- Detailed Design
- Transportation & Installation Engineering
- Project & Construction Management

Procurement



- Purchasing & Strategic Sourcing
- QA/QC & Inspections
- Logistics & Warehousing
- Materials Preservation
- Inventory Management

Construction



- Fabrication
- Platform Revamp/Retrofit
- Heavy Lift
- Hookup & Commissioning
- Civil Construction

Installation



- Subsea SURF Installation
- FPSO Mooring & Hook Up
- Pipeline Installation
- Inspection, Maintenance & Repair



Marine Assets: Vessel Fleet

Oshe Honmi (MIV)



Year - 2015
Accommodation - 402 Pax
Deck Area - 1500 sq.m
Deck Strength - 15T/m²
Draft - 3.5m
Crane Capacity - 300T
10-Point Mooring System
Heavy Lift & Pipe lay Capabilities

Oshe Rewo (AHTS)



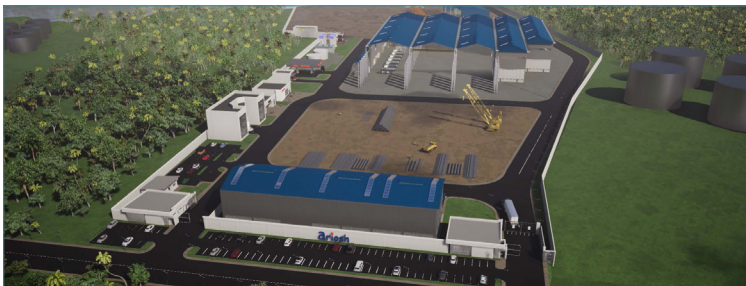
Year - 2016
Accommodation - 48 Pax
Deck Area - 450 sq.m
Deck Strength - 7 T/M²
Draft - 4.5m
Bollard Pull - 82.2T
Hybrid DP2

Oshe 3 (AHT)



Year - 2016
Accommodation - 20 Pax
Deck Area - 170 sq.m
Deck Strength - 5 T/M²
Draft - 4.3m
Bollard Pull - 72.2T
DP1

Ariosh Fabrication Yard and Marine Logistics Base



- 10,000 metric tons of steel per annum
- 120,000 sq.m overall area
- 70,000 sq.m of fabrication area
- 250m long quayside @ 11m draft
- Fabrication yard upgrade is currently in progress

Contact

Home Office

5 Idowu Taylor St., Victoria Island
 Lagos, Nigeria

Fab Yard

Aker Road, Rumuolumeni, Portharcourt,
 Rivers State, Nigeria.
 Next to Neptune and Saipem Yard

Contact

+234.803.900.5000 | +234.1.277.3955
 +234.803.900.5011 | +234.803.900.5055
 chartering@ariosh.com | bd@ariosh.com